

You are in

[Knauf Insulation](#) | [Loft Insulation](#) | [Cavity Wall](#) | [Insulation Material](#) >
Building Insulation Solutions | Insulation For External Walls, Roof & Basement

Main Sections

[Site Map](#) | [Earthwool](#) | [ECOSE® Technology](#) | [Contact Us](#) | [Insulation Products](#) | [Rock & Glass Mineral Wool](#) | [Foam Insulation](#) | [Packaging](#) | [Pallet Collection and Re-use Service](#) | [Building Insulation Solutions](#) | [Insulation For External Walls, Roof & Basement](#) | [Design](#) | [Press Releases](#) | [About](#) | [Literature Downloads](#) | [Case Studies](#) | [Videos](#) | [Insulation News](#) | [Insulate your home](#) | [Home Insulation](#) | [Insulating Loft or Cavity Wall Guide](#) | [Builders' Merchants Awards for Excellence 2010](#) | [Great British Refurb - Manchester House](#) | [Events](#) | [Play SupaKube Crazy](#) | [SelfBuildInsulation.com](#)

Current links

[1.0 Introduction](#)

[Residential](#)

[Non-Residential](#)

[Industrial Process](#)

[Heating Ventilation & Air Conditioning](#)

[Acoustic Solutions](#)

[Fire Solutions](#)

[Thermal Insulation](#) | [Insulation of Buildings](#) | [Buildings Energy Performance](#)

[Sector Guides](#)

[Other Elements](#)

[External Wall Insulation](#)

[External Floors](#)

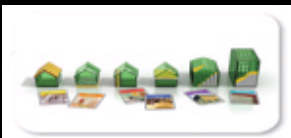
[Roofs](#)

[Internal Walls & Floors](#)

Insulation Solutions for Buildings

The below 5 sections of the website contain self-contained PDFs of the key sections of the "Insulation Solutions for Buildings" Design Manual.

[1.0 Introduction](#)



[Buildings & Energy](#) | [Key Design Considerations](#) | [Building Regulations](#) | [Product & System Accreditation](#) | [The Science of Insulation](#) | [Which Material?](#)

[2.0 Residential New-Build](#)



[General](#) | [Roofs](#) | [External Walls](#) | [External Floors](#) | [Basements](#) | [Internal Walls & Floors](#) | [Fire Protection](#)



3.0 Residential Refurbishment

[Products & Applications](#) | [Roofs](#) | [External Walls](#) | [External Floors](#) | [Basements](#) | [Internal Walls & Floors](#) | [Fire Protection](#)



4.0 Non-Residential New-Build

[Products & Applications](#) | [Roofs](#) | [External Walls](#) | [External Floors](#) | [Basements](#) | [Internal Walls & Floors](#) | [Suspended Ceilings](#) | [Fire Protection](#)



5.0 Non-Residential Refurbishment

[Products & Applications](#) | [Roofs](#) | [External Walls](#) | [External Floors](#) | [Basements](#) | [Internal Walls & Floors](#) | [Suspended Ceilings](#) | [Fire Protection](#)

Specialist Solutions & Applications



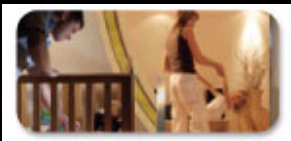
Industrial Process

[Process Pipework](#) | [Process Vessels](#)



Heating, Ventilation and Air Conditioning (HVAC)

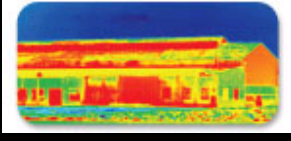
[Pipes](#) | [Ducts](#)



Acoustic Solutions



Fire Solutions



Thermal Solutions



Sector Guides

A collections of documents, in PDF format, for selected key sectors, including Housing, Education and Healthcare.

Product Quicklinks

Crown
Polyfoam

Rocksilk
Other

Any Comments?

We are currently undertaking a major overhaul of how we present our products and solutions on-line and we would be very interested to hear your thoughts on how we can better provide the information you require. For example, all the solutions are now available in PDF format only. Is this better, or would you prefer to have the information in a normal webpage?

Please email webmasteruk@knaufinsulation.com with your comments, they will help shape the future of this website.

[1.0 Introduction](#) | [Residential](#) | [Non-Residential](#) | [Industrial Process](#) | [HVAC](#) | [Acoustic Solutions](#) | [Fire Solutions](#) | [Thermal Solutions](#) | [Sector Guides](#) | [Other Elements](#) | [External Walls](#) | [External Floors](#) | [Roofs](#) | [Internal Walls & Floors](#)

[Return to Graphics Mode](#)