



## Knauf Insulation Ltd

P O Box 10  
Stafford Road  
St Helens  
Merseyside WA10 3NS  
Tel: 01744 24022 Fax: 01744 612007  
e-mail: tech@knaufinsulation.co.uk  
website: www.knaufinsulation.co.uk

(23.9)	Rn7	(M2)
--------	-----	------

**Agrément  
Certificate  
No 97/3433**  
Third issue\*

Designated by Government  
to issue  
European Technical  
Approvals

## ROCKSILK ACOUSTIC FLOOR SLAB AND ROCKSILK ACOUSTIC FLOOR SLAB PLUS

Isolation en laine minéral pour planchers des rez-de-chassées  
Fußbodenwärmeeisolation

## Product



• THIS CERTIFICATE RELATES TO ROCKSILK ACOUSTIC FLOOR SLAB AND ROCKSILK ACOUSTIC FLOOR SLAB PLUS, ROCK MINERAL WOOL SLABS.

- The product is used on ground-supported or suspended concrete ground floors to reduce the thermal transmittance. It may also be installed on exposed and semi-exposed intermediate concrete floors.
- The product is also used as a resilient layer for acoustic insulation of timber-based separating floors.
- It is essential that the floors comply with the conditions set out in the Design Data and Installation parts of this Certificate.

## Regulations

### 1 The Building Regulations 2000 (as amended) (England and Wales)



The Secretary of State has agreed with the British Board of Agrément the aspects of performance to be used by the BBA in assessing the compliance of floor insulation with the Building Regulations. In the opinion of the BBA, Rocksilk Acoustic Floor Slab and Rocksilk Acoustic Floor Slab Plus, if used in accordance with the provisions of this Certificate, will meet or contribute to meeting the relevant requirements.

Requirement: C2(c)	Resistance to moisture
Comment:	Floors incorporating the product can meet this Requirement. See section 11.1 of this Certificate.
Requirement: E1	Protection against sound from other parts of the building and adjoining buildings
Comment:	When installed in suitable floor constructions, the product can contribute to meeting this Requirement. See sections 12.1 to 12.5 of this Certificate.
Requirement: L1(a)(i)	Dwellings
Requirement: L2(a)	Buildings other than dwellings
Comment:	The product can enable, or contribute to enabling, a floor to meet these Requirements. See sections 10.2 to 10.5 of this Certificate.
Requirement: Regulation 7	Materials and workmanship
Comment:	The product is acceptable. See section 14 of this Certificate.

# Electronic Copy

## 2 The Building (Scotland) Regulations 2004



In the opinion of the BBA, Rocksilk Acoustic Floor Slab and Rocksilk Acoustic Floor Slab Plus, if used in accordance with the provisions of this Certificate, will satisfy or contribute to satisfying the various Regulations and related Mandatory Standards as listed below.

Regulation:	8	Fitness and durability of materials and workmanship
Regulation:	8(1)	Fitness and durability of materials and workmanship
Comment:		The product can contribute to a construction satisfying this Regulation. See section 14 and the <i>Installation</i> part of this Certificate.
Regulation:	9	<b>Building standards — construction</b>
Standard:	2.1	Compartmentation
Comment:		The product can contribute to satisfying this Standard, with reference to clause 2.1.13 <sup>(2)</sup> . See sections 8.2 and 8.3 of this Certificate.
Standard:	2.2	Separation
Comment:		The product can contribute to satisfying this Standard, with reference to clauses 2.2.4 <sup>(2)</sup> and 2.2.7 <sup>(1)</sup> . See sections 8.2 and 8.3 of this Certificate.
Standard:	3.15	Condensation
Comment:		The product can contribute to satisfying this Standard, with reference to clause 3.15.3 <sup>(1)</sup> . See section 11.1 of this Certificate.
Standard:	5.1	Resisting sound transmission to dwellings
Comment:		The product can contribute to satisfying this Standard, with reference to clauses 5.1.2 <sup>(1)</sup> , 5.1.9 <sup>(1)</sup> and 5.1.10 <sup>(1)</sup> . See sections 12.1 and 12.4 of this Certificate.
Standard:	6.2	Building insulation envelope
Comment:		The product can contribute to satisfying this Standard, with reference to clauses 6.2.1 <sup>(1)(2)</sup> Table 1, 6.2.4 <sup>(1)(2)</sup> and 6.2.5 <sup>(1)(2)</sup> . See sections 10.2 to 10.5 of this Certificate.

(1) Technical Handbook (Domestic).  
(2) Technical Handbook (Non-Domestic).

## 3 The Building Regulations (Northern Ireland) 2000



In the opinion of the BBA, Rocksilk Acoustic Floor Slab and Rocksilk Acoustic Floor Slab Plus, if used in accordance with the provisions of this Certificate, will satisfy or contribute to satisfying the various Building Regulations as listed below.

Regulation:	B2	Fitness of materials and workmanship
Comment:		The product is acceptable. See section 14 of this Certificate.
Regulation:	F2	Building fabric
Comment:		The product will enable, or contribute to enabling, a floor to satisfy this Regulation. See sections 10.2 to 10.5 of this Certificate.
Regulation:	G2(2)	Separating walls and separating floors
Regulation:	G3(2)	Existing walls and floors which become separating walls and separating floors
Comment:		When installed in suitable floor constructions the product can contribute to satisfying these Regulations. See sections 12.1, 12.4 and 12.5 of this Certificate.

## 4 Construction (Design and Management) Regulations 1994 (as amended) Construction (Design and Management) Regulations (Northern Ireland) 1995 (as amended)

Information in this Certificate may assist the client, planning supervisor, designer and contractors to address their obligations under these Regulations.

See section: 6 *Delivery and site handling* (6.2) of this Certificate.

## Technical Specification

### 5 Description

5.1 Rocksilk Acoustic Floor Slab and Rocksilk Acoustic Floor Slab Plus consist of an unfaced, plain-edged slab manufactured from high-density mineral wool (rock) which is resin-bonded and water-repellent.

5.2 The slabs are supplied with the nominal characteristics of:

length (mm)	1200
width (mm)	600
thickness (mm)	25, 30, 40, 50
edge profile	plain
minimum compressive strength (kPa)	10
density (kgm <sup>-3</sup> )	
Rocksilk Acoustic Floor Slab	100
Rocksilk Acoustic Floor Slab Plus	140

### 6 Delivery and site handling

6.1 The slabs are delivered to site in packs shrink-wrapped in polyethylene. Each pack carries a label bearing the manufacturer's name, product description, essential instructions for installation and the BBA identification mark incorporating the number of this Certificate.

6.2 The slabs must be stored under cover until required for use.

## Design Data

### 7 General

7.1 Rocksilk Acoustic Floor Slab and Rocksilk Acoustic Floor Slab Plus are effective in reducing the U value (thermal transmittance) of new or existing concrete floors and as a resilient layer for acoustic insulation of timber-based separating floors.

7.2 The Rocksilk Acoustic Floor Slab can contribute to the airborne and impact sound insulation of timber-based party floors (Floor Type 3) (see section 12).

7.3 Rocksilk Acoustic Floor Slab Plus can contribute to the airborne and impact sound insulation of concrete separating floors.

7.4 Ground-supported concrete floors incorporating the slabs must include a suitable damp-proof membrane, laid in accordance with the relevant clauses of CP 102 : 1973, BS 8102 : 1990 or BS 8215 : 1991 (see section 9 of this Certificate).

7.5 Suspended concrete ground floors, incorporating the slabs must include suitable ventilation of the subfloor or a damp-proof membrane (see section 9).


7.6 The overlay to the slabs should be:

- a cement-based floor screed, laid in accordance with the relevant clauses of BS 8204-1 : 2003 and/or BS 8204-2 : 2003, and BS 8000-9 : 2003, or
- wood-based floor, eg tongue-and-groove, flooring grade particle board (Type P5 or P7) to BS EN 312 : 2003 or oriented strand board of type OSB/3 or OSB/4 to BS EN 300 : 1997, 18 mm thick (minimum), installed in accordance with ENV 12872 : 2000, or
- a concrete slab in accordance with BS 8204-1 : 2003 and BS 8204-2 : 2003.

7.7 Floors intended to support heavy, vibrating items must be designed to take into account the recommendations given in section 13.5.

### 8 Behaviour in relation to fire

8.1 The slabs do not prejudice the fire resistance properties of the floor and will not contribute to the development stages of a fire nor present a smoke or toxic hazard.

 8.2 The product has been characterised as being reaction to fire class A1 and may therefore be regarded as non-combustible.

8.3 Acoustic separating floors incorporating the product must provide the required fire rating.

### 9 Moisture penetration

9.1 The slabs can be installed on floors that are designed and constructed to prevent moisture ingress from the ground coming into contact with the insulation. See sections 7.2 and 7.3.

9.2 Floors incorporating the product detailed or designed in accordance with the national Building Regulations are acceptable:

#### England and Wales

Approved Document C, Technical Solutions 4.7 to 4.12 or 4.18 to 4.20

#### Scotland

Mandatory Standard 3.4, clauses 3.4.1<sup>(1)(2)</sup>, 3.4.2<sup>(1)(2)</sup> and 3.4.3<sup>(1)(2)</sup>

#### Northern Ireland


Technical Booklet C, Section 1.

(1) Technical Handbook (Domestic).

(2) Technical Handbook (Non-Domestic).

### 10 Thermal insulation

10.1 For the purpose of U value calculations to determine if the requirements of the Building (or other statutory) Regulations are met, the thermal conductivity ( $\lambda_{90/90}$  value) of the insulation may be taken as 0.036 Wm<sup>-1</sup>K<sup>-1</sup>.

 10.2 The requirement for limiting heat loss through the building fabric can be satisfied if the U values of the building elements,

including thermal bridging, do not exceed the maximum values in the relevant Elemental Method given in national Building Regulations:

## England and Wales

Approved Documents L1 and L2, Table 1

## Scotland

Mandatory Standard 6.2

## Northern Ireland


Technical Booklet F, Tables 1.2 or 1.4.

10.3 Guidance is also given in these documents on selecting the thickness of insulation required to enable a floor to achieve the desired U value. Alternative approaches to the Elemental Method are described which allow for some flexibility in design of U values for individual constructional elements.

10.4 The U values of floors may be calculated in accordance with CIBSE Guide A3 : 1999 *Thermal properties of building structures* or BS EN ISO 13370 : 1998.


10.5 Care should be taken to ensure that the design allows for limiting excessive additional heat loss and risk of surface condensation at junctions between the floor and other building elements. Reference can be made to *Limiting thermal bridging and air leakage : Robust construction details for dwellings and similar buildings* TSO 2002 or BR 262 : 2002 *Thermal insulation — avoiding risks*.

## 11 Condensation

 11.1 Floors will adequately limit the risk of surface condensation when the thermal transmittance (U value) does not exceed  $0.7 \text{ Wm}^{-2}\text{K}^{-1}$  at any point and the junctions with walls are designed in accordance with the relevant requirements of TSO publication *Limiting thermal bridging and air leakage : Robust construction details for dwellings and similar buildings* or BRE Information Paper IP 17/01 *Assessing the effects of thermal bridging at junctions and around openings*.

11.2 Floors will adequately limit the risk of interstitial condensation when they are designed and constructed in accordance with BS 5250 : 2002, Section 8.5 and Appendix D.

## 12 Sound insulation

 12.1 Separating sub-floors, flanking elements and overlays incorporating the product must be designed and constructed to avoid direct paths for airborne sound transmission and to minimise the flanking sound transmission. Guidance is given in the following documents:

### England and Wales


Approved Document E and the Robust details, Part E *Resistance to the passage of sound* (Jan 2005)

### Scotland


Mandatory Standard 5.1

### Northern Ireland

Technical Booklets G and G1.

 12.2 Laboratory tests in accordance with Appendix D of Robust details, Part E on floating floor treatments (FFT), comprising 25 mm and 30 mm Rocksilk Acoustic Floor slab Plus in conjunction with 18 mm chipboard, achieved a reduction in impact sound transmission ( $\Delta L_w$ ) values greater than 17 dB. These finishes may therefore be used as a FFT4 on Robust concrete separating floor details E-FC-1 and E-FC-2.

12.3 Separating floors incorporating the product in England and Wales, other than those described in section 12.2, are subject to pre-completion testing in accordance with Section 1 of Approved Document E.

 12.4 Rocksilk Acoustic Floor Slab may be used as the resilient layer in timber-frame separating floor constructions (type 3) and provide satisfactory airborne and impact sound insulation in these floors detailed or designed in accordance with:

### England and Wales


Approved Document E, Section 3

### Scotland

Mandatory Standard 5.1

### Northern Ireland

Technical Booklets G, Section 1.11.

 12.5 Rocksilk Acoustic Floor Slab may be used as the resilient layer in floor treatment 2 for floors formed by a material change of use and provide satisfactory airborne and impact sound insulation in floors detailed and designed in accordance with:

### England and Wales

Approved Document E, Sections 4.31 to 4.34

### Northern Ireland

Technical Booklet G1, Section 2.6.

## 13 Floor loading

13.1 The design loadings for self-contained dwelling units, as defined in BS 6399-1 : 1996 are:

intensity of distributed load (kPa)	1.5
concentrated load (kN)	1.4

13.2 The slabs, covered with particle board or screed, can support these design loadings without undue deflection (1 mm or 2 mm maximum). These deflections will be slightly greater for very small floor areas.

13.3 A BRE survey of imposed floor loading in domestic buildings (see BRE Current Paper No 2/77 *Floor loadings in domestic buildings — the results of a survey*), indicates that loadings in flats are commonly in the region of 0.6 kPa and loadings of 1.5 kPa are normally associated with fixed items.

13.4 Where the slabs are used under a concrete slab, resistance to concentrated and distributed loads is a function of the concrete slab specification.

13.5 It is recommended that with heavy, vibrating items, such as washing machines, the overlay is supported on timber battens of the same thickness as the insulation. Where the floor is required to resist impact sound transmission the battens should incorporate a resilient layer.

## 14 Durability



The slabs are rot-proof, dimensionally stable and, when installed with the overlays specified in this Certificate, will remain effective for the life of the building in which they are incorporated.

## Installation

## 15 General

15.1 Typical methods of installing Rocksilk Acoustic Floor Slab and Rocksilk Acoustic Floor Slab Plus are shown in Figure 1.

### Timber floors

15.2 It is essential that the design and installation of Rocksilk Acoustic Floor Slab on separating timber floors is strictly in accordance with good building practice and the requirements of this Certificate, to ensure that paths for sound transmission through the floor assembly and the flanking elements are minimised. Each installation should be checked to ensure that:

- the floor is as shown in Figure 1(d)
- the floor incorporates a minimum of 100 mm thick mineral wool quilt in the cavity
- junctions between the flanking elements and the sub-floor deck are suitably sealed
- junctions in cavity walls flanking the floor are stopped
- junctions with internal non-loadbearing walls are sealed
- fixings or services do not bridge the acoustic floor slab
- ceiling comprises two layers of plasterboard with joints staggered not less than 30 mm overall thickness
- junctions between ceiling and wall linings are filled and taped.

15.3 Before installation, the floor should be inspected thoroughly for possible defects and its condition should meet the recommendations of BS 8201 : 1987, Section 6.

### Concrete floors

15.4 All concrete floor surfaces should be smooth, level and flat to within 5 mm when measured with a two-metre straight-edge. Irregularities greater than this must be removed. Minor depressions (up to 10 mm deep) may be levelled with mortar or a thin screed.

15.5 In ground-supported concrete floors, the concrete floor slab over which the slabs are laid should be left for as long as possible to maximise drying out and dissipation of constructional moisture, in accordance with BS 8203 : 2001, Section 3.1.2.

15.6 Where the product is used over ground-supported concrete floor slabs the floor should incorporate a suitable damp-proof membrane, for example in accordance with CP 102 : 1973, BS 8102 : 1990 to resist moisture from the ground. If a liquid type, damp-proof membrane is applied to the concrete slabs, it should be of a type compatible with mineral wool and be allowed to dry out fully before laying the insulation slabs.

15.7 The slab can be used on a beam-and-block suspended concrete floor that is the subject of a current Agrément Certificate<sup>(1)</sup> and installed in accordance with, and within the limitations imposed by, that Certificate or those designed and installed to the precast concrete and general loading codes, that have been assessed as suitable.

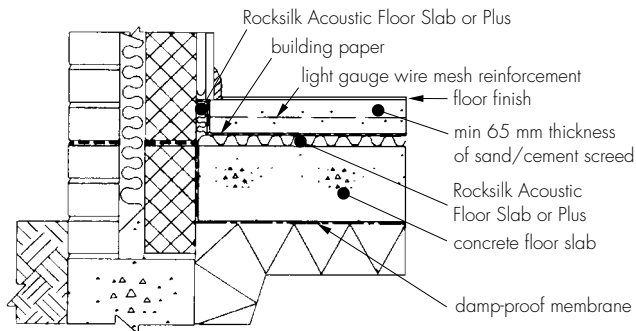
(1) Specifiers are advised to check the validity of Agrément Certificates.

15.8 Where the product is used under ground-supported concrete slabs the hard core must be compacted and blinded before application of a suitable damp-proof membrane and laying the insulation slabs.

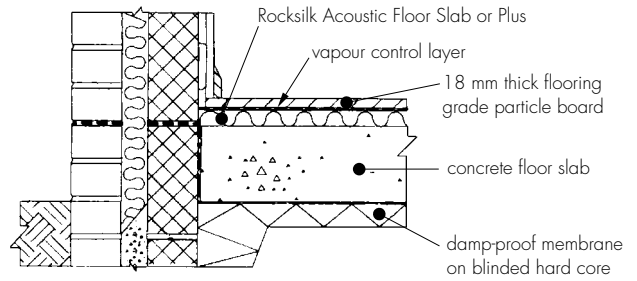
15.9 Where a screed or concrete slab is laid over the insulation slabs, vertical upstands of insulation should be provided and be of sufficient depth to fully separate the screed or concrete slab from the wall and provide a minimum thermal resistance of  $0.75 \text{ m}^2\text{KW}^{-1}$ . A suitable cavity or external wall insulation material can be extended below the damp-proof course and a minimum of 150 mm below the top of the floor insulation to provide edge insulation to the floor.

15.10 To limit the risk of damage from condensation and other sources of dampness, the slab and the overlay should only be laid after the construction is substantially weathertight, eg after glazing. The slabs and particle board overlays must also be protected, from water spillage, plaster droppings, traffic during construction.

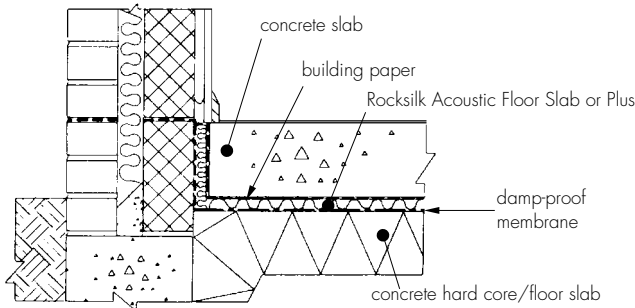
Figure 1 Typical installation methods



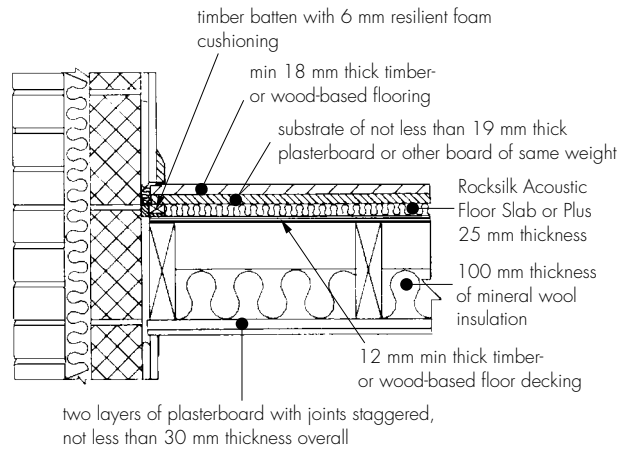
(a) cement-based screed overlay



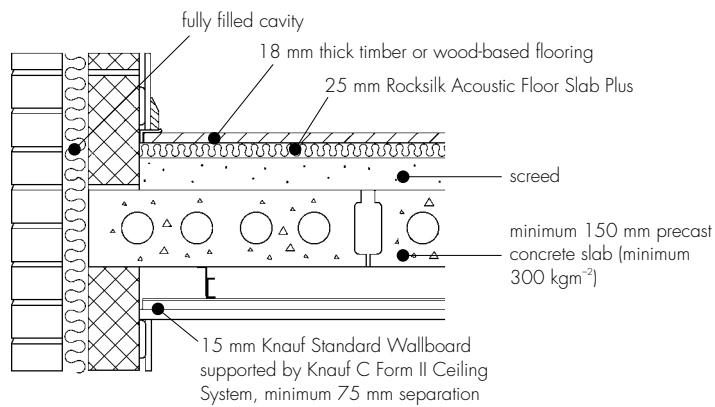
(b) particle board overlay



(c) concrete slab overlay



(d) timber-based separating floor



(e) suspended concrete construction

## 16 Procedure

16.1 The slabs are cut to size, as necessary, and laid with closely-butted joints ensuring that all spaces are completely filled.

### Particle board overlay

16.2 Before laying the slabs, preservative-treated battens, in accordance with BS 1282 : 1999 are positioned at room perimeters, doorways, access panels and to support partitions. Adequate time should be allowed for preservatives to be fixed and the solvents from solvent-based preservatives to evaporate.

16.3 Permanent heavy items should be supported with battens positioned on the sub-floor and recessed into the insulation. Partitions should be built directly on to the sub-floor. For further information contact the Certificate holder's Technical Advisory Service.

16.4 Where the slabs are laid on a dpm, a continuous vapour control layer with sealed joints of polyethylene sheet, minimum thickness 0.25 mm (1000 gauge) may be laid between the slabs and the particle board unless a condensation risk analysis to BS 5250 : 2002 shows that it is not necessary. The polyethylene sheet must have 150 mm overlaps taped at the joints and is turned up 100 mm at the walls (see Figure 1).

16.5 Tongue-and-groove particle board (type P5 or P7), or OSB/3 and OSB/4, 18 mm thick, is laid with staggered cross-joints in accordance with ENV 12872 : 2000.

16.6 An expansion gap between the particle board and the perimeter walls or abutments should be provided at the rate of 2 mm per metre run or a minimum of 10 mm, whichever is the greater.

16.7 Where there are long, uninterrupted lengths of floor, eg corridors, proprietary expansion joints must be installed at intervals on the basis of a 2 mm gap per metre run of particle board.

16.8 Before the boards are interlocked, a PVA adhesive is applied to the joints.

16.9 Once the particle board is laid, temporary wedges are inserted between the walls and the floor to maintain tight joints until the adhesive has set.

16.10 When the wedges are removed and before the skirting boards are fixed, suitable compressible filler, eg pieces of glass wool or foam should be fitted around the perimeter of the floor between the particle board and the walls.

16.11 Where there is a likelihood of regular water spillage, eg in rooms such as kitchens, bathrooms, shower and utility rooms, additional protection should be considered, eg a continuous, flexible, vinyl sheet flooring with welded joints and cove skirting.

### Concrete slab overlay (ground bearing only)

16.12 Perimeter insulation of minimum thickness 25 mm should be placed vertically between edge of the slab and external wall, up to the lower edge of the skirting. The concrete slab is laid over building paper to the required thickness [see Figure 2(c)].

### Cement-based screed overlay

16.13 Perimeter edge pieces are cut and placed around the edges before building paper and a properly-compacted screed of a minimum 65 mm thickness are laid. The relevant clauses of BS 8204-1 : 2003 should be followed and BRE Digest 224 : 1981 *Cellular plastics for buildings. Floors* and BRE Digest 104 : 1979 *Floor screeds* should be consulted.

### Timber-based separating floors

16.14 The slabs are laid over timber- or wood-based floor decking (12 mm minimum thick) and covered with 19 mm thick plasterboard (or other board of no lesser weight). Finally, a layer of 18 mm thick timber- or wood-based flooring is laid on top (see also sections 16.2 to 16.11 and Figure 1).

## 17 Incorporation of services

17.1 The slabs must not be used in direct contact with electrical heating cables (see section 17.3).

### Suspended beam and block floors

17.2 Where the slabs are installed on a floor of a suspended beam and block design, all services must be installed in accordance with the Agrément Certificate for that floor so as not to impair the floor performance.

### Other types of floor

17.3 Where possible, electrical conduits, gas and water pipes or other services should be contained within ducts or channels within the concrete slab. Where this is not possible, the services may be accommodated within the insulation, provided they are securely fixed to the concrete slab.

17.4 Where water pipes are installed within the concrete slab or the insulation slab they must be pre-lagged.

17.5 On overlay board floors, in situations where access to the services is desirable, a duct may be formed by mechanically fixing, to the floor, timber bearers of the same thickness as the insulation to provide support for a particle board cover. The duct should be as narrow as possible and not exceed 400 mm in width or the maximum particle board spans given in ENV 12872 : 2000 without intermediate support. Services should be suitably fixed to the floor base and not to the insulation boards (see section 10.5 with regard to limiting heat loss).

17.6 In timber intermediate floors, all the services should be incorporated beneath the existing floor.

## Technical Investigations

The following is a summary of the technical investigations carried out on RocksilK Acoustic Floor Slab and RocksilK Acoustic Floor Slab Plus.

### 18 Tests

Tests were carried out to determine:

- creep
- density
- dimensional analysis
- deformation under compressive load.

### 19 Investigations

19.1 An examination was made of data relating to:

- thermal conductivity
- durability
- properties in relation to fire
- effect of moisture
- physical properties of the slab
- sound insulation performance ratings.

19.2 Existing data relating to the risk of interstitial condensation were examined and confirmed.

## Bibliography

BS 1282 : 1999 *Wood preservatives — Guidance on choice, use and application*

BS 5250 : 2002 *Code of practice for control of condensation in buildings*

BS 6399-1 : 1996 *Loading for buildings — Code of practice for dead and imposed loads*

BS 8000-9 : 2003 *Workmanship on building sites — Cementitious levelling screeds and wearing screeds — Code of practice*

BS 8102 : 1990 *Code of practice for protection of structures against water from the ground*

BS 8201 : 1987 *Code of practice for flooring of timber, timber products and wood based panel products*

BS 8203 : 2001 *Code of practice for installation of resilient floor coverings*

BS 8204-1 : 2003 *Screeds, bases and in-situ floorings — Concrete bases and cement sand levelling screeds to receive floorings — Code of practice*

BS 8204-2 : 2003 *Screeds, bases and in-situ floorings — Concrete wearing surfaces — Code of practice*

BS 8215 : 1991 *Code of practice for design and installation of damp-proof courses in masonry construction*

BS EN 300 : 1997 *Oriented Strand Boards (OSB) — Definitions, classification and specifications*

BS EN 312 : 2003 *Particleboards — Specifications*

BS EN ISO 13370 : 1998 *Thermal performance of buildings — Heat transfer via the ground — Calculation methods*

CP 102 : 1973 *Code of practice for protection of buildings against water from the ground*

ENV 12872 : 2000 *Wood-based panels — Guidance on the use of load-bearing boards in floors, walls and roofs*

## Conditions of Certification

### 20 Conditions

20.1 This Certificate:

- (a) relates only to the product that is named, described, installed, used and maintained as set out in this Certificate;
- (b) is granted only to the company, firm or person identified on the front cover — no other company, firm or person may hold or claim any entitlement to this Certificate;
- (c) is valid only within the UK;
- (d) has to be read, considered and used as a whole document — it may be misleading and will be incomplete to be selective;
- (e) is copyright of the BBA;
- (f) is subject to English law.

20.2 References in this Certificate to any Act of Parliament, Regulation made thereunder, Directive or Regulation of the European Union, Statutory Instrument, Code of Practice, British Standard, manufacturers' instructions or similar publication, are references to such publication in the form in which it was current at the date of this Certificate.

20.3 This Certificate will remain valid for an unlimited period provided that the product and the manufacture and/or fabrication including all related and relevant processes thereof:

- (a) are maintained at or above the levels which have been assessed and found to be satisfactory by the BBA;

(b) continue to be checked as and when deemed appropriate by the BBA under arrangements that it will determine; and

(c) are reviewed by the BBA as and when it considers appropriate.

20.4 In granting this Certificate, the BBA is not responsible for:

- (a) the presence or absence of any patent, intellectual property or similar rights subsisting in the product or any other product;
- (b) the right of the Certificate holder to market, supply, install or maintain the product; and
- (c) the actual works in which the product is installed, used and maintained, including the nature, design, methods and workmanship of such works.

20.5 Any recommendations relating to the use or installation of this product which are contained or referred to in this Certificate are the minimum standards required to be met when the product is used. They do not purport in any way to restate the requirements of the Health & Safety at Work etc Act 1974, or of any other statutory, common law or other duty which may exist at the date of this Certificate or in the future; nor is conformity with such recommendations to be taken as satisfying the requirements of the 1974 Act or of any present or future statutory, common law or other duty of care. In granting this Certificate, the BBA does not accept responsibility to any person or body for any loss or damage, including personal injury, arising as a direct or indirect result of the installation and use of this product.



In the opinion of the British Board of Agrément, Rocksilk Acoustic Floor Slab and Rocksilk Acoustic Floor Slab Plus are fit for their intended use provided they are installed, used and maintained as set out in this Certificate. Certificate No 97/3433 is accordingly awarded to Knauf Insulation Ltd.

On behalf of the British Board of Agrément

A handwritten signature in black ink, appearing to read 'G. A. Cooper', is written over a light grey background.

Chief Executive

Date of Third issue: 30th June 2005

*\*Original Certificate issued 11th February 1998. This amended version includes addition of product range, reference to revised national Building Regulations and Standards, additional fire and sound insulation data, additional Installation information and additional Investigations, and new Conditions of Certification.*



# Electronic Copy

---

**British Board of Agrément**

P O Box No 195, Bucknalls Lane  
Garston, Watford, Herts WD25 9BA  
Fax: 01923 665301

©2005

e-mail: [mail@bba.star.co.uk](mailto:mail@bba.star.co.uk)  
website: [www.bbacerts.co.uk](http://www.bbacerts.co.uk)



For technical or additional information,  
contact the Certificate holder (see  
front page).  
For information about the Agrément  
Certificate, including validity and  
scope, tel: Hotline 01923 665400,  
or check the BBA website.